



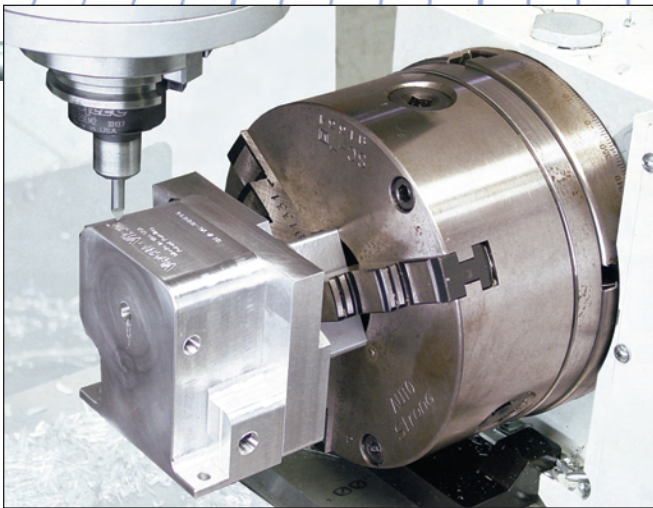
CENTROID™

CNC Rotary Tables

Precision CNC Rotary Table Packages



In Stock, Ready for Delivery
Rotary Tables Shown with Optional Manual Chuck



CENTROID Rotary Tables Features:

- Vertical or Horizontal Operation
- Easy On-Site Installation
- True 4th Axis Contouring
- Simultaneous 4 Axis Machining
- High Precision
- Low Cost
- Program with Conversational Software
- Program with G-Code or CAD / CAM



Rotary Tables Packages Include:

- Rotary Table
- 4th Axis Prewire
- Servo Drive
- Servo Motor
- 4th Axis Software
- AC or DC Configuration

RT-100



- 120mm / 4.72 Inch Diameter
- 360° Rotation in 1.8 seconds AC Unit
- 360° Rotation in 2.7 seconds DC Unit
- Auto Home Switch
- Pneumatic Brake

Table Diameter (mm / inch)	120 / 4.72
Center Height in Vertical (mm / inch)	115 / 4.53
Table Height in Horizontal (mm / inch)	170 / 6.69
Thru-Hole Diameter (mm / inch)	30 / 1.18
Width of T-slot (mm / inch)	10 / 0.39
Width of Guide Block (mm / inch)	14 / 0.55
Gear Ratio	1:90
Min. Indexing Unit (deg.)	0.001°
Max R.P.M. (AC / DC)	33.3 / 22.2
Indexing Accuracy (arc sec.)	60
Repeatability (arc sec.)	±3
Overall Dimensions H / W / L (inch)	7.5" / 5.9" / 15.66"
N.W. (kgs / lbs)	28 / 62

AC Package #10879A • DC Package #10761

**Optional Manual Chuck (#SC-4*)
Manual Chuck Adapter Plate (#AP-1)**



- 150mm / 5.9 Inch Diameter
- 360° Rotation in 1.8 seconds AC Unit
- 360° Rotation in 2.7 seconds DC Unit
- Auto Home Switch
- Pneumatic Brake

RT-150

Table Diameter (mm / inch)	150 / 5.9
Center Height in Vertical (mm / inch)	135 / 5.31
Table Height in Horizontal (mm / inch)	165 / 6.5
Thru-Hole Diameter (mm / inch)	35 / 1.37
Width of T-slot (mm / inch)	12 / 0.47
Width of Guide Block (mm / inch)	18 / 0.71
Gear Ratio	1:90
Min. Indexing Unit (deg.)	0.001°
Max R.P.M. (AC / DC)	33.3 / 22.2
Indexing Accuracy (arc sec.)	25
Repeatability (arc sec.)	±3
Overall Dimensions H / W / L (inch)	11.6" / 6.4" / 18.3"
N.W. (kgs / lbs)	70 / 154

AC Package #10907A • DC Package #10450

**Optional Manual Chuck (#SC/SK-6*)
Manual Chuck Adapter Plate (#AP-1)**



- 200mm / 7.87 Inch Diameter
- 360° Rotation in 1.8 seconds AC Unit
- 360° Rotation in 2.7 seconds DC Unit
- Auto Home Switch
- Pneumatic Brake

RT-200

Table Diameter (mm / inch)	200 / 7.87
Center Height in Vertical (mm / inch)	135 / 5.31
Table Height in Horizontal (mm / inch)	165 / 6.5
Thru-Hole Diameter (mm / inch)	35 / 1.37
Width of T-slot (mm / inch)	12 / 0.47
Width of Guide Block (mm / inch)	18 / 0.71
Gear Ratio	1:90
Min. Indexing Unit (deg.)	0.001°
Max R.P.M. (AC / DC)	33.3 / 22.2
Indexing Accuracy (arc sec.)	25
Repeatability (arc sec.)	±3
Overall Dimensions H / W / L (inch)	11.6" / 6.4" / 18.3"
N.W. (kgs / lbs)	84 / 185

AC Package #10908A • DC Package #10451

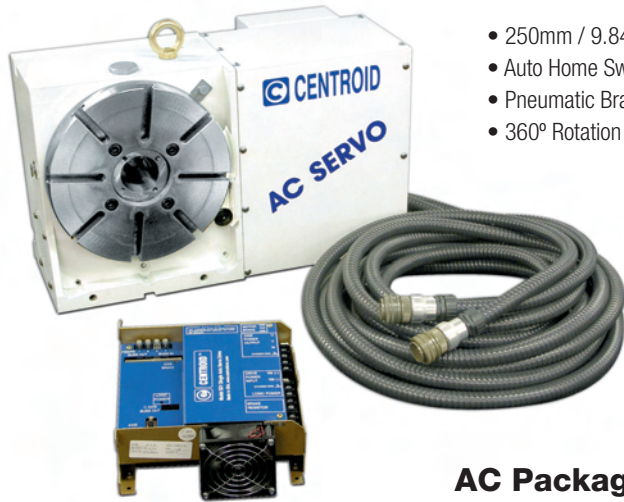
**Optional Manual Chuck (#SC/SK-7*)
Manual Chuck Adapter Plate (#AP-1)**

*All chucks include an adapter plate.

RT-250

Table Diameter (mm / inch)	250 / 9.84
Center Height in Vertical (mm / inch)	185 / 7.28
Table Height in Horizontal (mm / inch)	200 / 7.78
Thru-Hole Diameter (mm / inch)	52 / 2.05
Width of T-slot (mm / inch)	12 / 0.47
Width of Guide Block (mm / inch)	18 / 0.71
Gear Ratio	1:180
Min. Indexing Unit (deg.)	0.001°
Max R.P.M. (AC)	16.6
Indexing Accuracy (arc sec.)	15
Repeatability (arc sec.)	±2
Overall Dimensions H / W / L (inch)	12.4" / 7.8" / 20.6"
N.W. (kgs / lbs)	124 / 273

Optional Manual Chuck (#SC/SK-8*)
Manual Chuck Adapter Plate (#AP-2)



- 250mm / 9.84 Inch Diameter
- Auto Home Switch
- Pneumatic Brake
- 360° Rotation in 3.6 seconds

AC Package #10909A

RT-320

Table Diameter (mm / inch)	320 / 12.6
Center Height in Vertical (mm / inch)	210 / 8.27
Table Height in Horizontal (mm / inch)	240 / 9.45
Thru-Hole Diameter (mm / inch)	105 / 4.13
Width of T-slot (mm / inch)	14 / 0.55
Width of Guide Block (mm / inch)	18 / 0.71
Gear Ratio	1:180
Min. Indexing Unit (deg.)	0.001°
Max R.P.M. (AC)	16.6
Indexing Accuracy (arc sec.)	15
Repeatability (arc sec.)	±2
Overall Dimensions H / W / L (inch)	14.9" / 9.4" / 25.3"
N.W. (kgs / lbs)	210 / 463

Optional Manual Chuck (#SC/SK-10*)
Manual Chuck Adapter Plate (#AP-2)

- 320mm / 12.60 Inch Diameter
- Auto Home Switch
- Pneumatic Brake
- 360° Rotation in 3.6 seconds
- Large 4" Through Hole



AC Package #10923A

DX1 Single axis CNC controller for Rotary or Linear applications

Programmable Rotary Indexer packages offer affordable automation for any machine tool. Any CENTROID rotary table can be controlled as a stand alone system using the CENTROID DX-1 as the control unit. Program CNC rotary moves on your manual machine or the DX-1 can be tied into your third party CNC control. The DX1 is made in the USA and is based on proven reliable user friendly CENTROID CNC technology.



- Easy to program
- Industry Standard G-code programming
- Linear or Rotary Control
- Controls DC or AC brushless servo motors

*All chucks include an adapter plate.

Fixed Tail Stocks

Part Number	Use With
TSA-101	RT-100
TSA-530	RT-150, RT-200
TSA-728	RT-250
TSA-826	RT-320



Accessories

5C Adapter



- Bolts to Rotary Tables
- Uses Standard 5C Collet
- Holds Small Parts with Ease
- Manual Closure

Part #5CC-1

Manual Chuck Adapter Plates

Part Number	Use With
AP-1	RT-100, RT-150, RT-200
AP-2	RT-250, RT-320

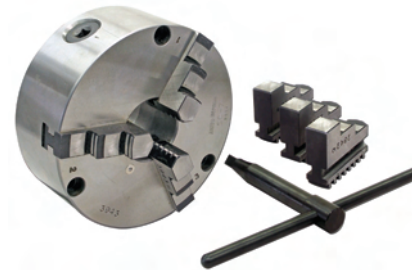


Manual Chucks

Part Number	Use With
SC-4	RT-100
SC-6 /	RT-150, RT-200
SC-7 /	RT-200
SC-8 /	RT-250
SC-10 /	RT-320

SC Series: non-replaceable jaws includes one ID and OD set.

SC series chucks include the appropriate adapter plate.



Distributor:



CENTROID

159 Gates Road • Howard, PA 16841
 Sales: 814.353.9256 • Fax: 814.353.9265
www.centroidcnc.com